

Basic Surgical and Prosthetic Steps for Success with the Prettau Bridge With delayed implant loading





1

Appointment one- Take initial impressions (2Upper 2 Lower), Bite, Facebow, Photos
CT Scan

Request from Lab immediate denture and wax duplicate of immediate denture



2

Surgery and delivery of immediate denture. Make sure there is adequate alveolar reduction and that implants are angled towards the cingulum and there is adequate spacing and AP spread.



3

Try in of wax duplicate during implant healing, making modifications as needed



4

Uncovery of implants, placing keratinized tissue towards the facial of the implants and making sure implants are not deeper than 3mm



5

Final open tray connected impression Bite registration and indexing of implants using wax duplicate (Use hard Blue Mousse and get accurate representation into implant (preferred) or of healing caps

Request verification jig and screw retained version of wax set up. Lab will determine if any multi units abutments are needed



6

Try in and radiograph of verification jig, and try in of screw retained wax set up.

Request PMMA screw retained temporary based on screw retained wax tryin. If major modifications are needed to wax try in then do one more try in and send photos of try in and possibly new bite



7

PMMA delivery-Verification jig will be used to seat multi unit abutments if needed AND for a soft tissue pickup around implants.

Request Final Prettau Bridge



8

Delivery of final Prettau Bridge

1

Appointment one- Take initial impressions (2Upper 2 Lower), Bite, Facebow, Photos
CT Scan

Request from Lab immediate denture and wax duplicate of immediate denture

2

Surgery and delivery of immediate denture. Make sure there is adequate alveolar reduction and that implants are angled towards the cingulum and there is adequate spacing and AP spread.

3

Try in of wax duplicate during implant healing, making modifications as needed

4

Uncovery of implants, placing keratinized tissue towards the facial of the implants and making sure implants are not deeper than 3mm

5

Final open tray connected impression Bite registration and indexing of implants using wax duplicate (Use hard Blue Mousse and get accurate representation into implant (preferred) or of healing caps

Request verification jig and screw retained version of wax set up. Lab will determine if any multi units abutments are needed

6

Try in and radiograph of verification jig, and try in of screw retained wax set up.

Request PMMA screw retained temporary based on screw retained wax tryin. If major modifications are needed to wax try in then do one more try in and send photos of try in and possibly new bite

7

PMMA delivery-Verification jig will be used to seat multi unit abutments if needed AND for a soft tissue pickup around implants.

Request Final Prettau Bridge

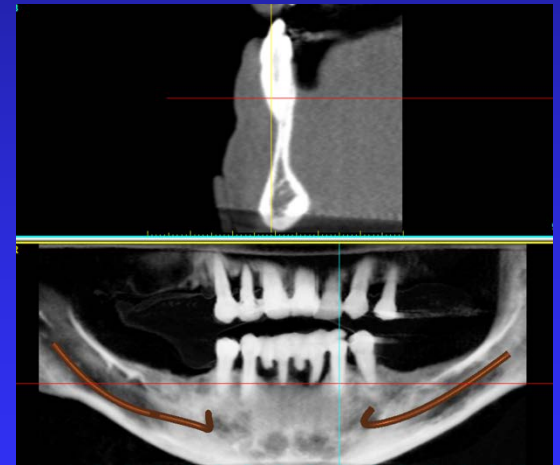
8

Delivery of final Prettau Bridge

1

Appointment one– Take initial impressions (2Upper 2 Lower), Bite, Facebow, Photos
CT Scan

Request from Lab immediate denture and wax duplicate of immediate denture



Basic steps for success with the Prettau Bridge when doing a 2 stage technique

1

Appointment one– Take initial impressions (2Upper 2 Lower), Bite, Facebow, Photos
CT Scan

Request from Lab immediate denture and wax duplicate of immediate denture

2

Surgery and delivery of immediate denture. Make sure there is adequate alveolar reduction and that implants are angled towards the cingulum and there is adequate spacing and AP spread.

3

Try in of wax duplicate during implant healing, making modifications as needed

4

Uncovery of implants, placing keratinized tissue towards the facial of the implants and making sure implants are not deeper than 3mm

5

Final open tray connected impression Bite registration and indexing of implants using wax duplicate (Use hard Blue Mousse and get accurate representation into implant (preferred) or of healing caps

Request verification jig and screw retained version of wax set up. Lab will determine if any multi units abutments are needed

6

Try in and radiograph of verification jig, and try in of screw retained wax set up.

Request PMMA screw retained temporary based on screw retained wax try in. If major modifications are needed to wax try in then do one more try in and send photos of try in and possibly new bite

7

PMMA delivery-Verification jig will be used to seat multi unit abutments if needed AND for a soft tissue pickup around implants.

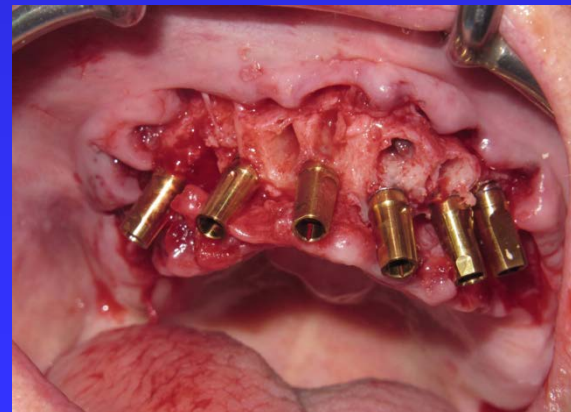
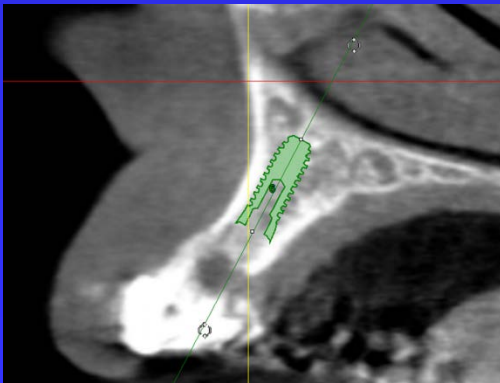
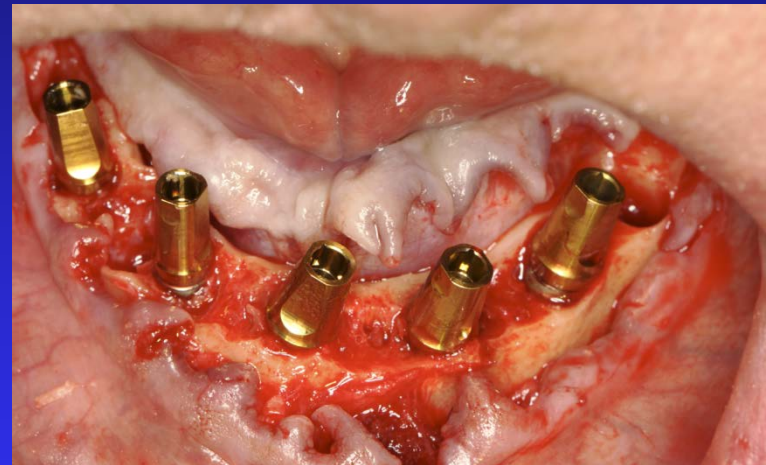
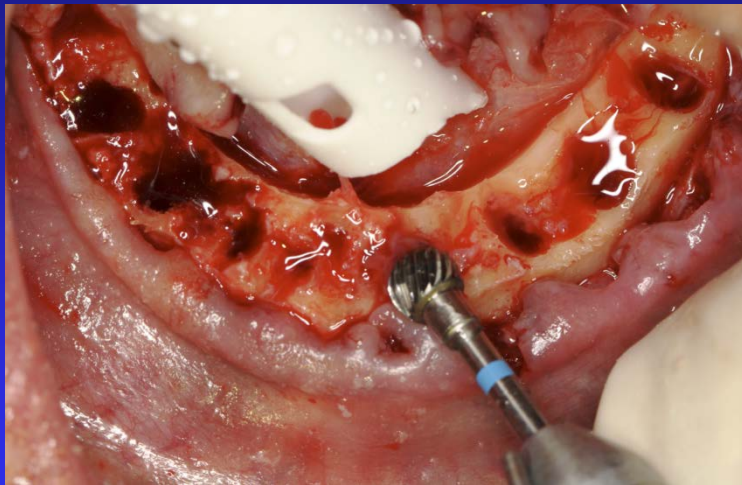
Request Final Prettau Bridge

8

Delivery of final Prettau Bridge

2

Surgery and delivery of immediate denture. Make sure there is adequate alveolar reduction and that implants are angled towards the cingulum and there is adequate spacing and AP spread.



Basic steps for success with the Prettau Bridge when doing a 2 stage technique

1

Appointment one- Take initial impressions (2Upper 2 Lower), Bite, Facebow, Photos
CT Scan
Request from Lab immediate denture and wax duplicate of immediate denture

2

Surgery and delivery of immediate denture. Make sure there is adequate alveolar reduction and that implants are angled towards the gingulum and there is adequate spacing and AP spread.

3

Try in of wax duplicate during implant healing, making modifications as needed

4

Uncovery of implants, placing keratinized tissue towards the facial of the implants and making sure implants are not deeper than 3mm

5

Final open tray connected impression Bite registration and indexing of implants using wax duplicate (Use hard Blue Mousse and get accurate representation into implant (preferred) or of healing caps
Request verification jig and screw retained version of wax set up. Lab will determine if any multi units abutments are needed

6

Try in and radiograph of verification jig, and try in of screw retained wax set up.
Request PMMA screw retained temporary based on screw retained wax try in. If major modifications are needed to wax try in then do one more try in and send photos of try in and possibly new bite

7

PMMA delivery-Verification jig will be used to seat multi unit abutments if needed AND for a soft tissue pickup around implants.
Request Final Prettau Bridge

8

Delivery of final Prettau Bridge

3

Try in of wax duplicate during implant healing, making modifications as needed



Basic steps for success with the Prettau Bridge when doing a 2 stage technique

1

Appointment one- Take initial impressions (2Upper 2 Lower), Bite, Facebow, Photos CT Scan

Request from Lab immediate denture and wax duplicate of immediate denture

2

Surgery and delivery of immediate denture. Make sure there is adequate alveolar reduction and that implants are angled towards the cingulum and there is adequate spacing and AP spread.

3

Try in of wax duplicate during implant healing, making modifications as needed

4

Uncovery of implants, placing keratinized tissue towards the facial of the implants and making sure implants are not deeper than 3mm

5

Final open tray connected impression Bite registration and indexing of implants using wax duplicate (Use hard Blue Mousse and get accurate representation into implant (preferred) or of healing caps

Request verification jig and screw retained version of wax set up. Lab will determine if any multi units abutments are needed

6

Try in and radiograph of verification jig, and try in of screw retained wax set up.

Request PMMA screw retained temporary based on screw retained wax tryin. If major modifications are needed to wax try in then do one more try in and send photos of try in and possibly new bite

7

PMMA delivery-Verification jig will be used to seat multi unit abutments if needed AND for a soft tissue pickup around implants.

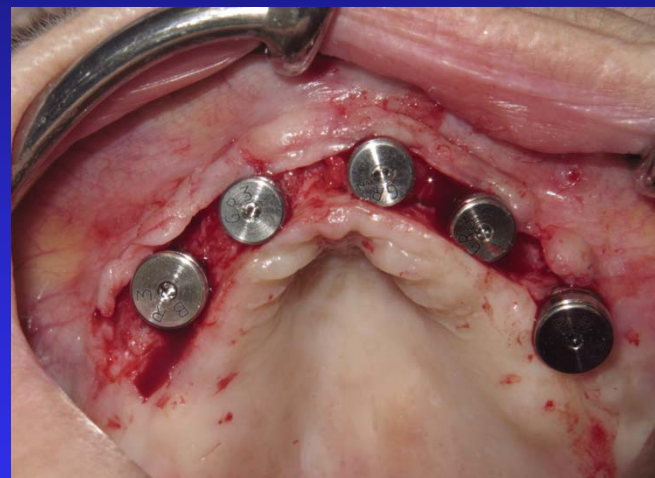
Request Final Prettau Bridge

8

Delivery of final Prettau Bridge

4

Uncovery of implants, placing keratinized tissue towards the facial of the implants and making sure implants are not deeper than 3mm



Basic steps for success with the Prettau Bridge when doing a 2 stage technique

1

Appointment one– Take initial impressions (2Upper 2 Lower), Bite, Facebow, Photos
CT Scan

Request from Lab immediate denture and wax duplicate of immediate denture

2

Surgery and delivery of immediate denture. Make sure there is adequate alveolar reduction and that implants are angled towards the cingulum and there is adequate spacing and AP spread.

3

Try in of wax duplicate during implant healing, making modifications as needed

4

Uncovery of implants, placing keratinized tissue towards the facial of the implants and making sure implants are not deeper than 3mm

5

Final open tray connected impression Bite registration and indexing of implants using wax duplicate (Use hard Blue Mousse and get accurate representation into implant (preferred) or of healing caps

Request verification jig and screw retained version of wax set up. Lab will determine if any multi units abutments are needed

6

Try in and radiograph of verification jig, and try in of screw retained wax set up.

Request PMMA screw retained temporary based on screw retained wax tryin. If major modifications are needed to wax try in then do one more try in and send photos of try in and possibly new bite

7

PMMA delivery-Verification jig will be used to seat multi unit abutments if needed AND for a soft tissue pickup around implants.

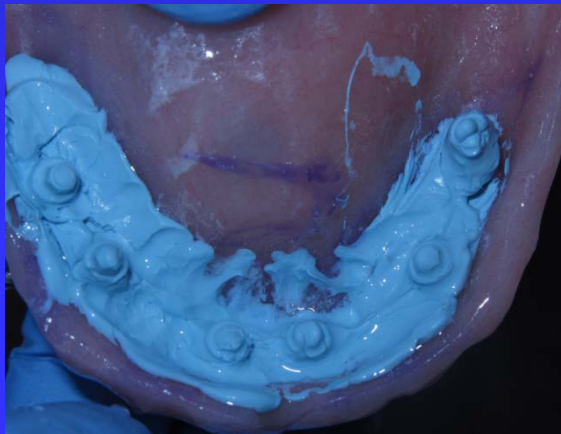
Request Final Prettau Bridge

8

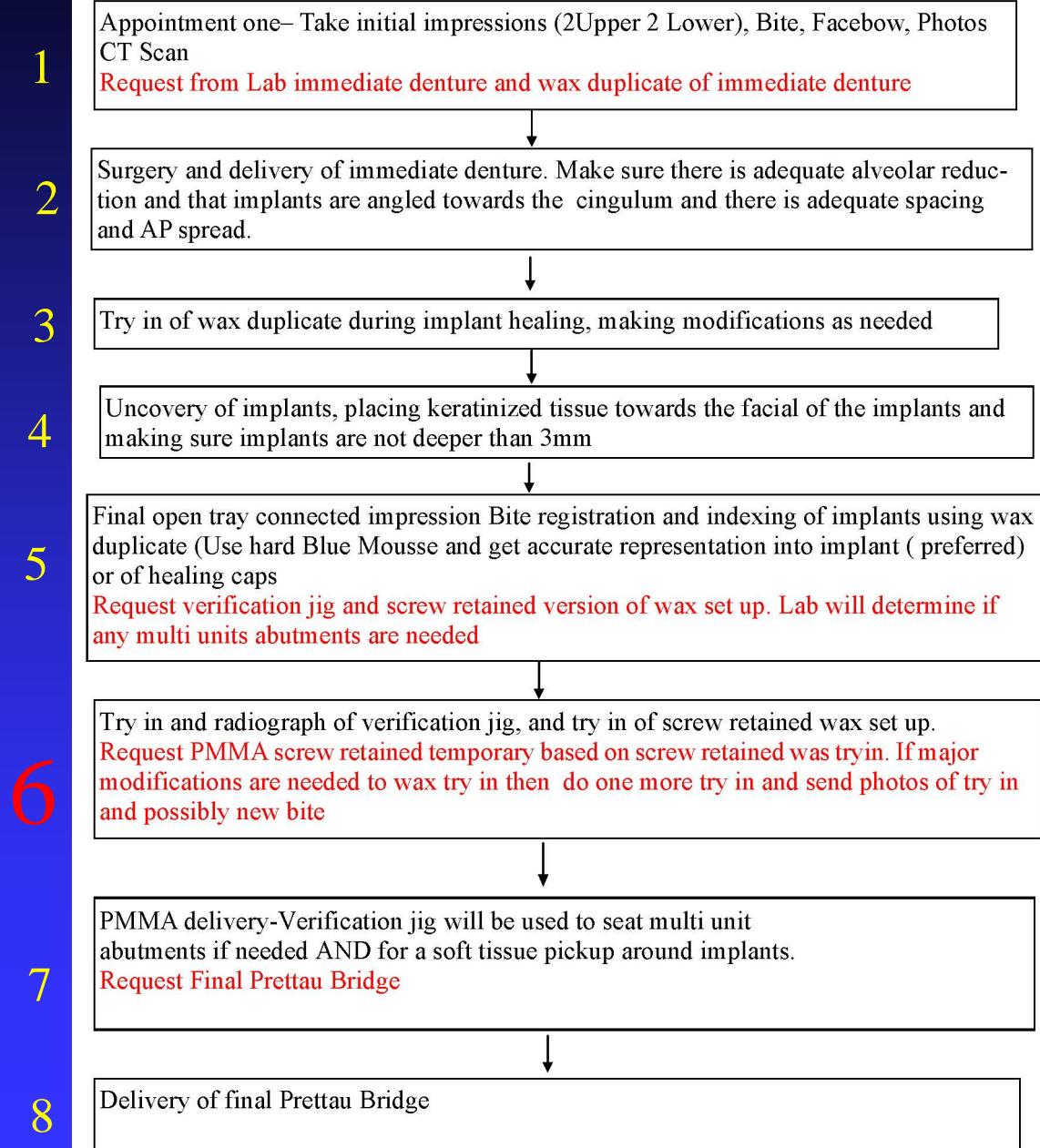
Delivery of final Prettau Bridge

Final open tray connected impression Bite registration and indexing of implants using wax duplicate (Use hard Blue Mousse and get accurate representation into implant (preferred or of healing caps

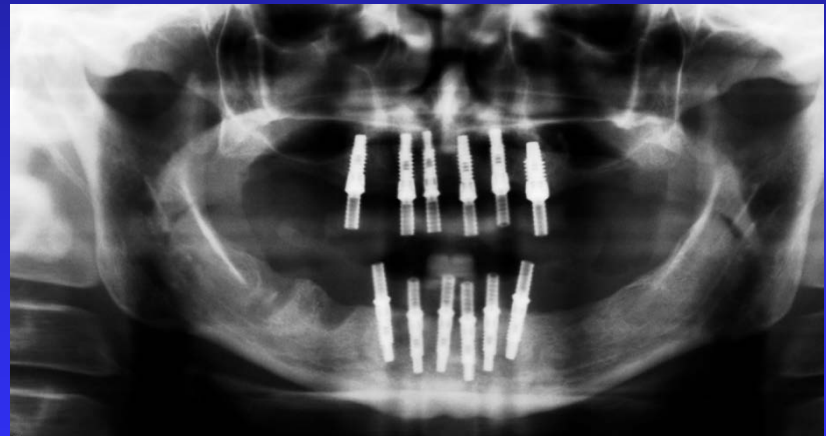
Request verification jig and screw retained version of wax set up. Lab will determine if any multi units abutments are needed



Basic steps for success with the Prettau Bridge when doing a 2 stage technique



Try in and radiograph of verification jig, and try in of screw retained wax set up.
Request PMMA screw retained temporary based on screw retained wax tryin. If major modifications are needed to wax try in then do one more try in and send photos of try in and possibly new bite



Basic steps for success with the Prettau Bridge
when doing a 2 stage technique

1

Appointment one– Take initial impressions (2Upper 2 Lower), Bite, Facebow, Photos
CT Scan

Request from Lab immediate denture and wax duplicate of immediate denture

2

Surgery and delivery of immediate denture. Make sure there is adequate alveolar reduction and that implants are angled towards the cingulum and there is adequate spacing and AP spread.

3

Try in of wax duplicate during implant healing, making modifications as needed

4

Uncovery of implants, placing keratinized tissue towards the facial of the implants and making sure implants are not deeper than 3mm

5

Final open tray connected impression Bite registration and indexing of implants using wax duplicate (Use hard Blue Mousse and get accurate representation into implant (preferred) or of healing caps

Request verification jig and screw retained version of wax set up. Lab will determine if any multi units abutments are needed

6

Try in and radiograph of verification jig, and try in of screw retained wax set up.

Request PMMA screw retained temporary based on screw retained wax tryin. If major modifications are needed to wax try in then do one more try in and send photos of try in and possibly new bite

7

PMMA delivery-Verification jig will be used to seat multi unit abutments if needed AND for a soft tissue pickup around implants.

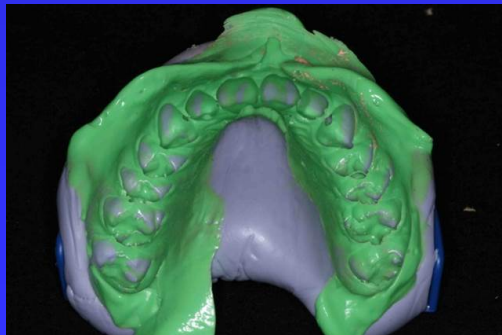
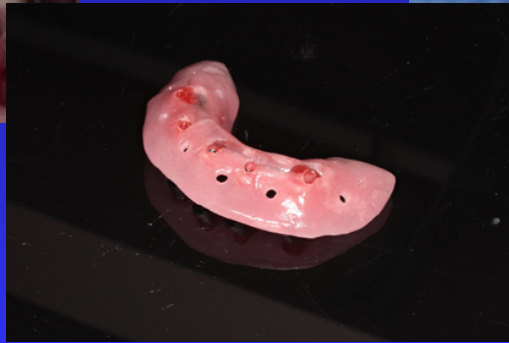
Request Final Prettau Bridge

8

Delivery of final Prettau Bridge

PMMA delivery-Verification jig will be used to seat multi unit abutments if needed AND for a soft tissue pickup around implants.

Request Final Prettau Bridge



If occlusal or shape changes are made to PMMA, important to take a high quality PVS impression with PMMA screwed onto model.

Basic steps for success with the Prettau Bridge when doing a 2 stage technique

1

Appointment one– Take initial impressions (2Upper 2 Lower), Bite, Facebow, Photos
CT Scan

Request from Lab immediate denture and wax duplicate of immediate denture

2

Surgery and delivery of immediate denture. Make sure there is adequate alveolar reduction and that implants are angled towards the cingulum and there is adequate spacing and AP spread.

3

Try in of wax duplicate during implant healing, making modifications as needed

4

Uncovery of implants, placing keratinized tissue towards the facial of the implants and making sure implants are not deeper than 3mm

5

Final open tray connected impression Bite registration and indexing of implants using wax duplicate (Use hard Blue Mousse and get accurate representation into implant (preferred) or of healing caps

Request verification jig and screw retained version of wax set up. Lab will determine if any multi units abutments are needed

6

Try in and radiograph of verification jig, and try in of screw retained wax set up.

Request PMMA screw retained temporary based on screw retained wax tryin. If major modifications are needed to wax try in then do one more try in and send photos of try in and possibly new bite

7

PMMA delivery-Verification jig will be used to seat multi unit abutments if needed AND for a soft tissue pickup around implants.

Request Final Prettau Bridge

8

Delivery of final Prettau Bridge

8

Delivery of final Prettau Bridge

