



ARTISTIC EXPRESSIONS DENTISTRY

CREATING MASTERPIECE SMILES

Ordinary Or Extradordinary?

You can have the smile you've dreamed of

Dr. Wilderman takes pride in giving patients a healthier, more attractive smile while also making procedures more comfortable. New patients are always welcome and you won't have to wait weeks for your appointment. Just call (267) 317-8467 today!

Here's what you can expect at Artistic Expressions Dentistry...

- Dr. Wilderman was named Top Cosmetic Dentist in Philadelphia Magazine's 2010 Top Dentists Awards - "Being voted on by my peers shows that hard work and dedication to my craft, really pays off"
■ Life-changing cosmetic dental care with leading-edge technologies designed to increase your comfort
■ Financing made easy - including all major credit cards and Care Credit a flexible monthly payment option with no initial payment and in some cases, 0% interest for up to 12 months!

A new smile can enhance your confidence, career success, romance, and give you a younger appearance. Call (267) 317-8467 today for your FREE consultation!



CALL US TODAY FOR YOUR APPOINTMENT (267) 317-8467

FREE 2nd OPINION

Cosmetic Consultation 20-Minute Consultation/Opinion on your dental condition and meet our wonderful staff.

restore the health & beauty of your teeth with cosmetic dentistry!

A Perfect Smile In No Time with Veneers

As low as \$125/month



Our Bodies. Our Mouths.

200+ reasons to maintain a healthy smile

When your parents encouraged you to brush and floss, you may have thought that they were just helping to ensure your healthy smile. But they were doing much more than that.

Today we have a better understanding of just how important oral hygiene is to your *overall* health. Scientists have linked gum disease to **over 200 other diseases**, including life-threatening ones.

Cancer: Breast, mouth, throat, kidney, pancreatic, and brain cancers have all been linked to gum disease.

Heart Disease: Gum disease has been shown to increase instances of heart attack and stroke.

Diabetes: Insulin sensitivity may be affected by gum disease and lead to unhealthy blood sugar levels.

Lung Disease: Plaque bacteria may cause infection or aggravate pre-existing conditions.

For many years, it was believed that bacteria was the only factor that linked periodontal disease to other infections, but more recent studies also suggest that gum inflammation may be the link to chronic inflammatory conditions including cardiovascular disease, diabetes, rheumatoid arthritis, and Alzheimer's.

If you have a family history of an inflammatory condition, or have been diagnosed with one, it's important to consult with both a general physician and a dental health professional to help monitor and manage your overall health.

If You Have Jaw Pain We can help!

Many of our patients suffer from *Temporomandibular Joint Disorder* or TMD. Often associated with stress, TMD causes a myriad of symptoms including head, jaw, neck, face, shoulder, and even back pain. Its causes include misaligned jaw joints, dislocated discs, jaw clenching or grinding, an uneven bite, and even arthritis.

TMD puts great stress on gums and ligaments, the supporting structures of your teeth, and can make you more vulnerable to common oral health issues including...

- Gingivitis or periodontal disease
- Receding gums
- Sensitive teeth and gums
- Chipped or broken teeth

Over ten million North American adults suffer from TMD and risk compromising their appearance and overall health. If you suspect TMD is jeopardizing your smile and causing you pain, don't wait to call us because we can help!



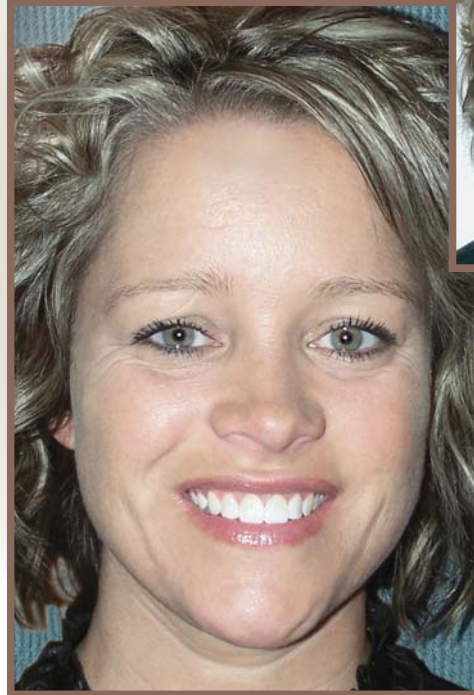
The Best Bond Ever

Get the makeover you've been waiting for!

Everyday living can take its toll on even the nicest of smiles. Foods, beverages, and medications can leave stains behind. And tobacco? Definitely a problem. Just growing older can yellow your enamel. Unconscious habits like grinding, clenching, and chewing on your pen can create irregular edges and chip your teeth. On the other hand, sometimes you're just born with a smile you don't like. Well, either way, you don't have to live with it. And you don't have to wait because you're on a budget, either. Tooth-colored bonding is a beautiful and affordable solution! Here are some of the flaws that bonding can fix for you...

- unattractive stained or silver-colored fillings
- broken or jagged fillings
- spiky surfaces surrounding a cavity
- chips or cracks in your enamel
- slight but noticeable gaps between teeth
- teeth that need re-shaping and re-proportioning
- teeth that have conspicuously darkened or stained over time.

Don't wait to call and ask us about beautiful bonding. It could be one of the easiest and least expensive makeovers you've ever had!



If you're uncomfortable with your smile, we have solutions. Call us today for a consultation, and let us give you the smile of your dreams!

Clean Eating

More than just a fad!

Clean eating is very trendy these days, but it's actually been around for generations. Its principles of eating whole, natural, unrefined foods and avoiding fatty, processed, or packaged ones have been advocated by health experts – including dentists – for generations.

Simple raw vegetables like cucumbers or celery aren't just for dieters. Both vegetables, especially celery, require a lot of munching that produces bacteria-buffering saliva that protects your teeth and gums. As well, any naturally fibrous food can act like a toothbrush to brush off plaque and massage your gums. And celery has a bonus – its leaves are a great substitute for breath-freshening parsley.

Clean eating turns your kitchen into a recipe-free zone. Simply snack on a handful of your favorite raw vegetable or combine veggies for a great-tasting salad!



*Power-up
your veg...
Combine
yellow, green
& red!*

Diabetes & Gum Disease

What you should know!

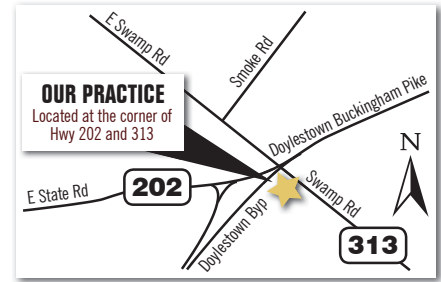
Approximately 285 million people worldwide have diabetes. With that phenomenal number in mind, it's really important to know that studies suggest that avoiding or managing periodontal disease may help reduce your risk of developing diabetes. This is because gum disease sets off the body's inflammatory response which can affect insulin sensitivity and lead to unhealthy blood sugar levels. In addition, studies show that the relationship goes two ways: not only does gum disease put you at risk for diabetes, diabetes puts you at risk for gum disease!

If you have diabetes, it's very important that you monitor and manage your oral health – at home and with the regular help of your dental team.

The research is in – a good dental health regimen, paired with regular checkups, can truly go a long way to ensuring your good health!

ARTISTIC EXPRESSIONS DENTISTRY
Dr. Bruce Wilderman
400 Swamp Rd
Doylestown, PA 18901-3148
www.MasterpieceSmile.com

PRSR STD
U.S. POSTAGE
PAID
PNP 14304



Dr. Bruce Wilderman
400 Swamp Road,
Doylestown
www.MasterpieceSmile.com

Meet Dr. Wilderman...

Dr. Bruce Wilderman, rated the Top Cosmetic Dentist of 2010 by *Philadelphia Magazine*, is dedicated to giving his patients lifelong fabulous sparkling smiles!

Dr. Wilderman graduated from *Temple University* with his Doctor of Dental Surgery degree in 1982, served his country with the US Navy Dental Corps, and has been devoted to continual education throughout his career. Since 1993, he's been a member of the *Dawson Center for Advanced Dental Study*, receiving the most advanced post-graduate training possible. He's appeared regularly on local television discussing how cosmetic dentistry can give you the natural, beautiful smile you deserve.

Dr. Wilderman and his wife Heidi give back to our community through their active involvement in the *ALS Society* and previously through sitting on the Board of the *Red Cross*. Dr. Wilderman gives his time to provide free dental care for patients at the Ann Silverman Clinic in the *Doylestown Hospital*.

Please call us now at (267) 317-8467. We look forward to meeting you!



FREE 2nd OPINION

Appointment Reserved for
Our Neighbors

WE CORDIALLY INVITE YOU TO CALL (267) 317-8467

- Dr. Wilderman was named Top Cosmetic Dentist in *Philadelphia Magazine's* 2010 Top Dentists Awards - " Being voted on by my peers shows that hard work and dedication to my craft, really pays off
- Life-changing cosmetic dental care with leading-edge technologies designed to increase your comfort
- Financing made easy - including all major credit cards and Care Credit a flexible monthly payment option with no initial payment and in some cases, 0% interest for up to 12 months!

Conveniently Located In Doylestown

- We treat you like family and make sure you are comfortable and well educated about your dental care.
- We find out what your needs, and wants are for your teeth
- Expertise in all areas of family dentistry, including preventive, restorative, cosmetics, dentures and implants at one convenient and nearby location
- Convenient Appointments
 - > Monday 9am - 5pm
 - > Tuesday 9am - 8pm
 - > Thursday 9am - 5pm
 - > Friday 8am - 2pm

“ It was obvious that the top priority at Artistic Expressions is to achieve the best possible outcome for the patient. The treatment I received was professional and efficient yet never felt rushed. I would not hesitate to recommend Dr. Wilderman's care to my family and friends.

Alex, Doylestown